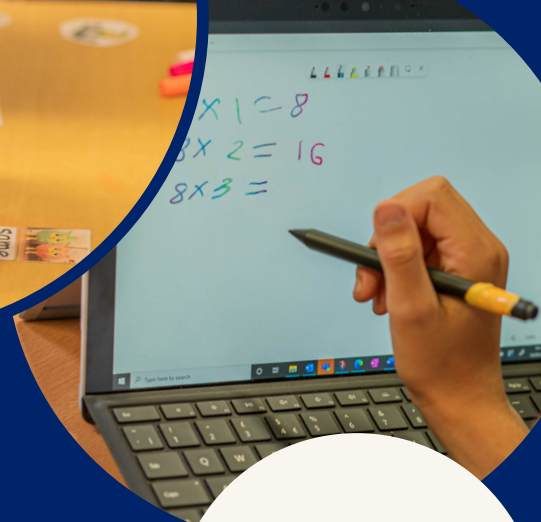


# OUTREACH CAROUSEL EVENT 2024

Wednesday  
17th April  
4:15-6:30pm



A range of mini- CPD sessions on  
supporting learners with SpLD  
including topics such as:

Use of Assistive Technology

Supporting reading and spelling

ELSA/Mental Health support

SpLD Study Skills for Key Stage 4

Dyscalculia-friendly teaching

[Click here to  
book your  
place!](#)

